

MONTHLY MEMBERSHIP PROGRESS REPORT

District A 1

Results as of: 12/31/2025

GMT:

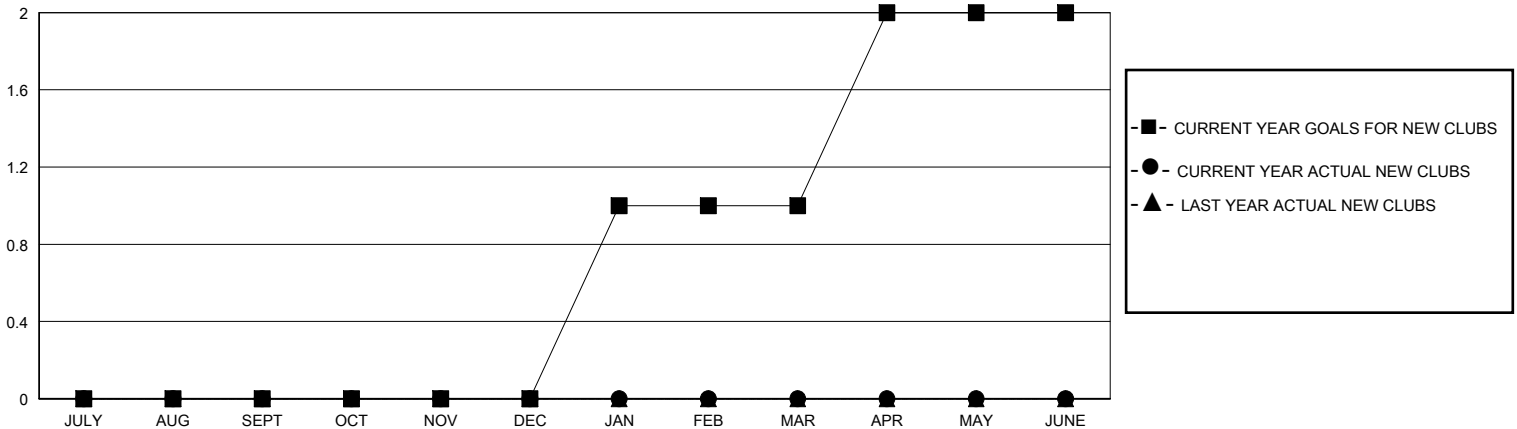
LOCATION ONTARIO

GMT CA

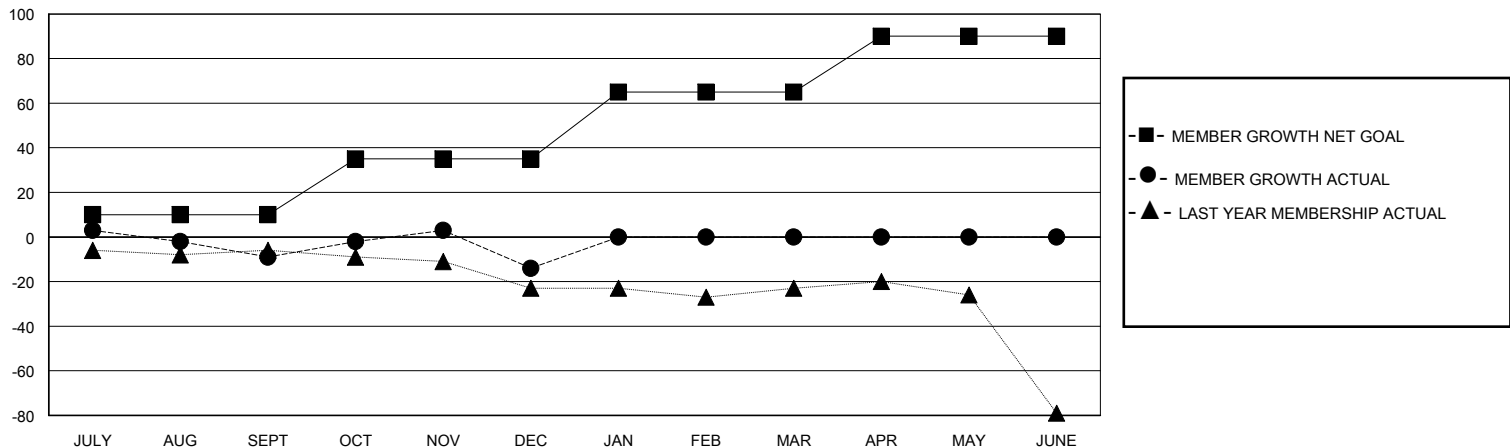
Clubs			
RESULTS FOR 2025-2026			
QUARTER	NEW CLUB GOAL	NEW CLUBS	DROPPED CLUBS
JULY/AUG/SEPT	0	0	0
OCT/NOV/DEC	0	0	0
JAN/FEB/MAR	1	0	0
APR/MAY/JUNE	1	0	0

Members			
RESULTS FOR 2025-2026			
QUARTER	MEMBER GROWTH NET GOAL	MEMBER GROWTH ACTUAL	DROPPED MEMBERS ACTUAL (including transfers)
JULY/AUG/SEPT	10	16	19
OCT/NOV/DEC	25	36	35
JAN/FEB/MAR	30	0	0
APR/MAY/JUNE	25	0	0

GOALS AND ACTUAL NEW CLUBS CUMULATIVE



GOALS AND ACTUAL MEMBERS CUMULATIVE



DROPPED CLUBS: 0

13 CLUBS OF 37 ADDED 1 OR MORE NEW MEMBERS

GENDER DISTRIBUTION

MALE 774 (72.68%)
FEMALE 289 (27.14%)

DROPPED MEMBERS

DECEASED	9
CLUB CANCELLED	0
OTHER	45
TOTAL	54

[CLICK HERE FOR CUMULATIVE MEMBERSHIP DATA](#)

TOTAL FAMILY UNIT MEMBERS	172
FAMILY MEMBERS PAYING HALF DUES	87